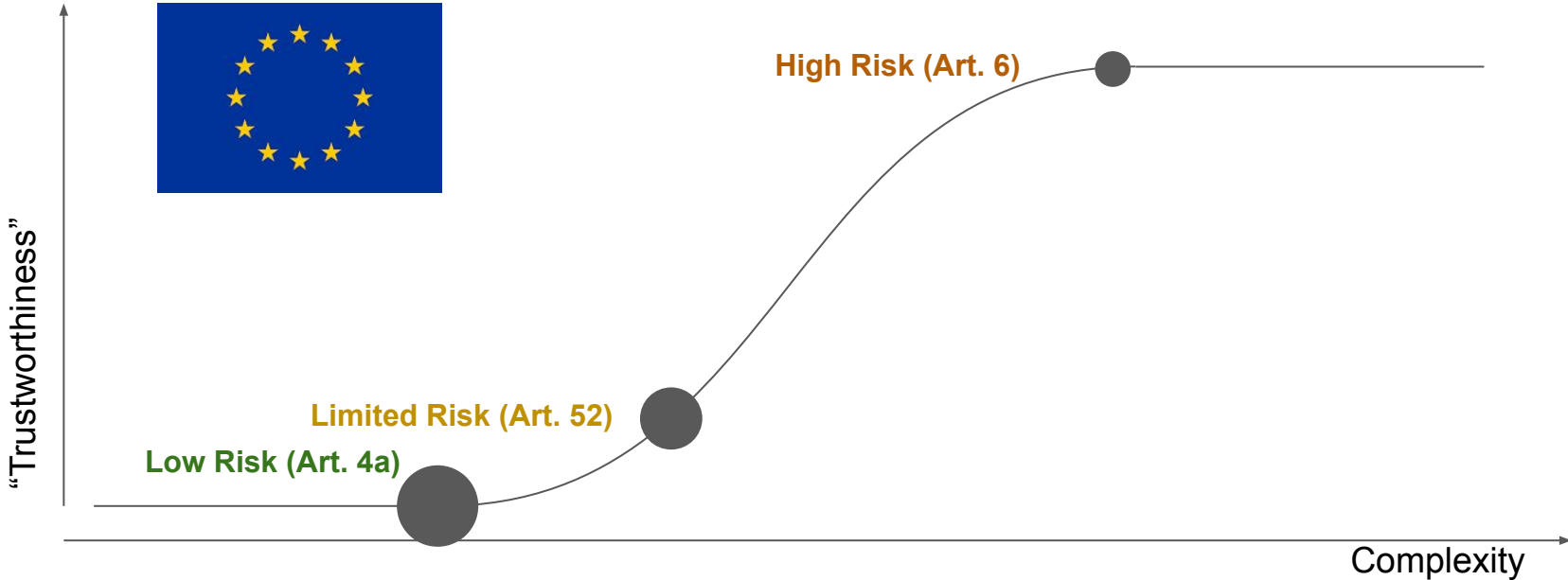


# Advancing Europe's Industry in an Age of AI

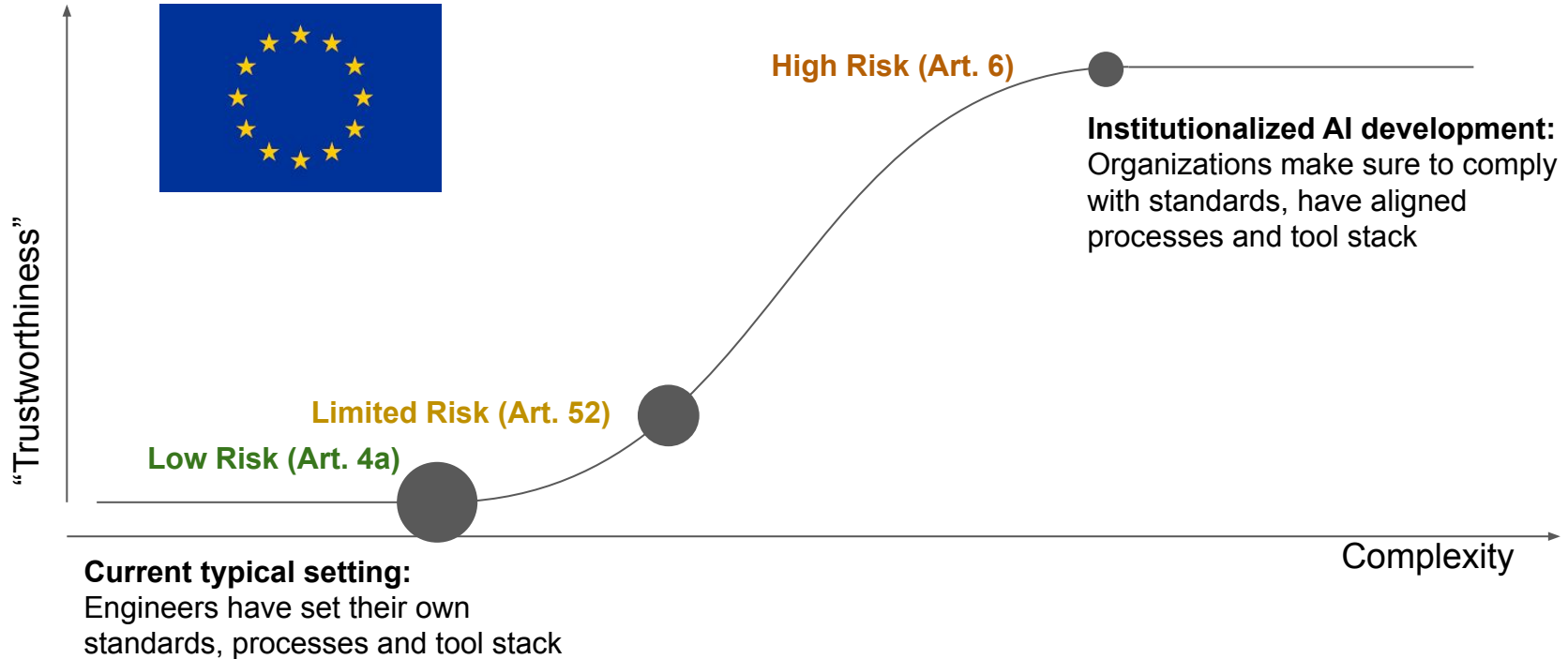
The AI Act from an economic  
perspective

78. Deutschen Betriebswirtschaftler-Tag der  
Schmalenbach-Gesellschaft, 10.09.2024 |  
Panel KI und Regulatorik & digitale Ethik

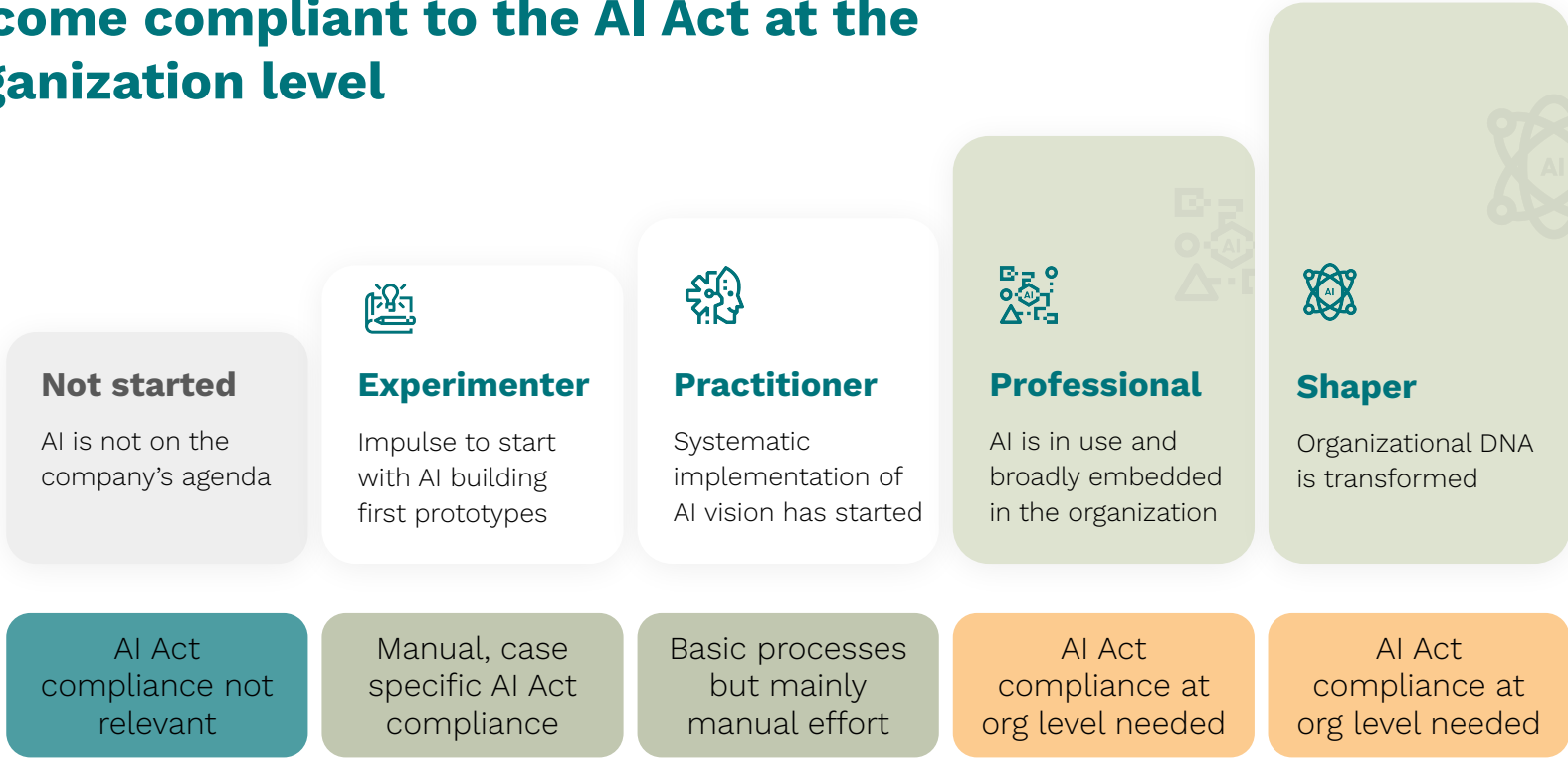
# The AI Act classifies AI cases into three categories



# The AI Act classifies AI cases into three categories



# Companies at higher levels of AI maturity have to become compliant to the AI Act at the organization level



# Companies have to find answers to a variety of questions

Which currently **existing use cases fall into the high risk category** and which do not?



How to deal with / translate AI Act requirements to **other regulations across the world?**



How to get existing **AI use cases compliant and how do I get compliance** in use cases that are currently being developed?



How to **maintain and monitor compliance** across the organization and for the suppliers?



How to make sure that the company achieves compliance on an organizational level as **quickly and cost-efficient as possible?**



How to make sure that individuals in the organization **follow the process and don't break the obligations accidentally?**



How to **upskill my AI experts** and users with the new requirements?



Where to find the **the best and reliable support** for the own compliance journey?



# Overall, we recommend a systematic use case portfolio management and governance framework on an organization level



## Selected free resources - from appliedAI

### Knowledge

**Applying AI:**  
The elements of a comprehensive AI strategy

[Download](#)

**Applying AI:**  
How to find and prioritize AI use cases

[Download](#)

**Applying AI:**  
Building the organization for scaling AI

[Download](#)

**Artificial Intelligence for Boards**  
-Gearing up for the Future of Business

[Download](#)

**Applying AI:**  
Enterprise Guide for Make-or-Buy Decisions

[Download](#)

**Applying AI:**  
Value Assessment of AI Products and Applications

[Download](#)

**The enterprise guide to ML**

[Download](#)

### Trainings

**Foundations of AI**

[See more](#)

**Elements of AI**

[See more](#)

**Intro for SMEs**

[See more](#)

### Tools

**Quick Check Maturity Assessment**

[See more](#)

**AI Start-up Landscape**

[See more](#)

**AI use cases (Institute gGmbH)**

[See more](#)



### Dr. Andreas Liebl

Managing Director  
appliedAI Initiative GmbH

a.liebl@appliedai.de  
+49 1608077515

Offices  
House of Communication  
August-Everding-Straße 25 81671 München

KI-Innovationspark W10  
Im Zukunftspark 7 Wohlgelegen  
74076 Heilbronn

Managing Directors: Dr. Andreas Liebl, Moritz Gräter  
Advisory Board: Prof. Dr. Helmut Schönenberger, Prof. Dr. Reinhold Geilsdörfer, Dr. Philipp Gerbert, Rolf Schumann, Dr. Volkmar Denner, Kirsten Rulf, Gerhard Oswald

Register Court: HRB 255519 | VAT: DE 329 788 437  
DUNS No. 34-313-3413

# Advancing Europe's industry to compete in the age of AI, shaping a future that we desire to live in

appliedAI is Europe's largest initiative for the application of cutting edge trustworthy AI in enterprises.

With our ecosystem, we strengthen and build the next AI champions in Europe.



We support companies with trustworthy solutions based on individual needs - tailored to small and medium sized companies, as well as larger organizations & enterprises.

**150+**

Employees at appliedAI Initiative GmbH

**300+**

Partners in ecosystem

**200**

**+**

~~Companies supported~~

**500**

**+**

~~Startups~~

**40+**

AI Strategies developed

**50+**

AI Applications developed

**2.5K+**

Trained in live sessions

Embedded in

**Global AI networks**

**45K+**

Trained in online courses

Represented in

**OECD & GPAI**



# We offer a unique set of offerings to help companies on their way to becoming AI shapers

**Not started**



**Experimenter**



**Practitioner**



**Professional**



**Shaper**

## Professional Services

Supporting companies to scale the application of AI through focussed services and solutions as well as AI programs that combine these services needs-oriented.

## Partnership Programs

Supporting companies in the entire AI transformation process through interactions with us and the ecosystem, access to knowledge, and co-creation of solutions to tackle future challenges

## Software Solutions

Professional B2B Software solutions for trustworthy application and scaling of AI

## Ventures

AI First Products